

SG-ZCM2057ND-O

- 2Megapixel 57x Long Range Zoom Starlight Network and Digital Dual Output Camera Module



1. Features

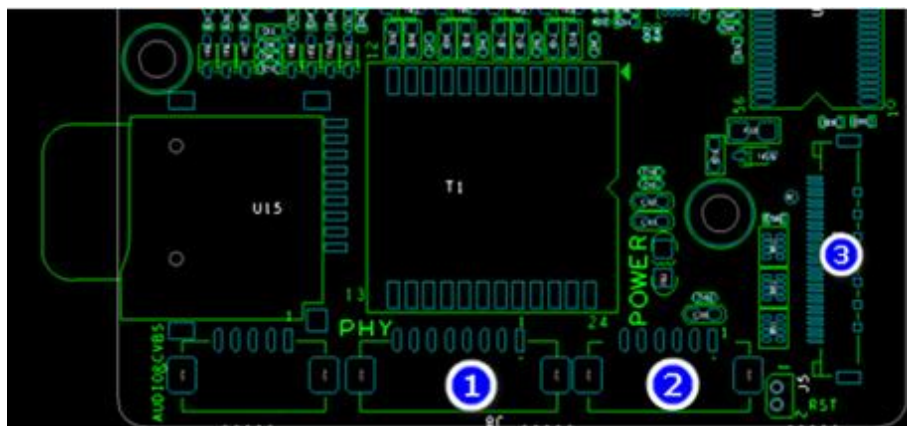
- > 1/1.8" Sony Exmor CMOS Sensor.
- > Powerful 57x optical zoom (15-850mm).
- > Max. 2Mp(1920x1080) Resolution
- > Support various IVS functions
- > Support EIS and Optical Defog
- > Support video output from the network port.
- > Support various OSD information overlay
- > **Support LVDS digital video output synchronously.**

2. Specification

Model		SG-ZCM2057ND-O
Sensor	Image Sensor	1/1.8" Sony Exmor CMOS
	Effective Pixels	Approx. 4.17 Megapixel
	Max. Resolution	1920(H) x 1080(V)
Lens	Focal Length	15mm ~ 850mm, 57x Optical Zoom
	Aperture	F2.8~F6.5
	Close Focus Distance	1m~10m (Wide ~ Tale)
	Angle of View	29°~0.4°
Video Network	Compression	H.265/H.264/H.264H/MJPEG
	Storage Capabilities	TF card, up to 128G
	Network Protocol	Onvif, GB28181, HTTP, RTSP, RTP, TCP, UDP
Resolution		50Hz: 25/50fps@2Mp(1920×1080), 25fps@1Mp(1280×720) 60Hz: 30/60fps@2Mp(1920×1080), 30fps@1Mp(1280×720)
LVDS Video		50Hz: 25/50fps@2Mp(1920×1080) 60Hz: 30/60fps@2Mp(1920×1080)

Firmware Upgrade(LVDS)	Only can upgrade the firmware via Network port.
IVS	Tripwire, Cross Fence Detection, Intrusion, Abandoned Object, Fast-Moving, Parking Detection, Crowd Gathering Estimation, Missing Object, Loitering Detection.
S/N Ratio	≥55dB (AGC Off, Weight ON)
Minimum Illumination	Color: 0.005Lux/F2.8; B/W: 0.0005Lux/F2.8
EIS	Support
Exposure Compensation	ON/OFF
Strong Light Suppression	ON/OFF
Day/Night	Auto/Manual
Zoom Speed	Approx 8s(Optical Wide-Tele)
Electronic Defog	ON/OFF
Optical Defog	Night Mode, 750nm~1100nm channel is Optical Defog
White Balance	Auto/Manual/ATW/Indoor/Outdoor/ Outdoor Auto/ Sodium lamp Auto / Sodium lamp
Electronic Shutter Speed	Auto Shutter (1/3s~1/30000s), Manual Shutter (1/3s~1/30000s)
Exposure	Auto/Manual
2D Noise Reduction	Support
3D Noise Reduction	Support
Flip	Support
External Control	TTL
Communication Interface	Compatible with the SONY VISCA Protocol
Focus Mode	Auto/Manual/Semi-automatic
Digital Zoom	4x
Operating Conditions	(-30°C~+60°C/20% to 80%RH)
Storage Conditions	(-40°C~+70°C/20% to 95%RH)
Power Supply	DC 12V±15% (Recommend: 12V)
Power Consumption	Static power: 4W, Sports power:9W
Dimensions(L*W*H)	Approx. 320mm*109mm*109mm
Weight	Approx. 3100g

3. Interface Definition:



Network Interface

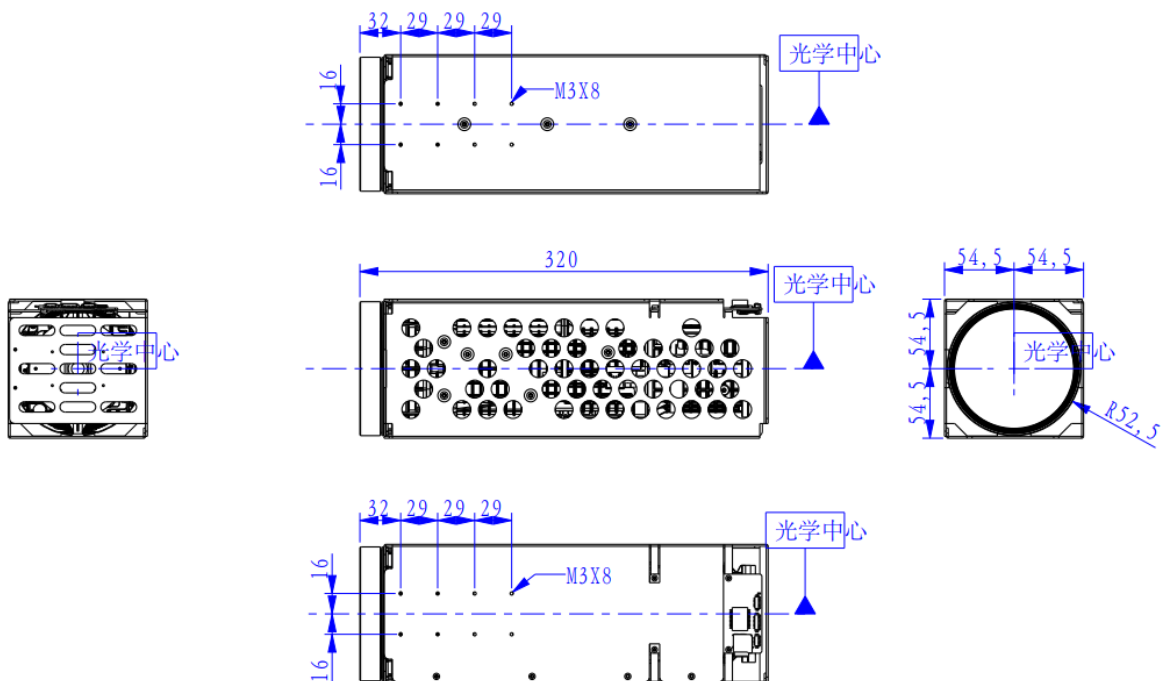
Type	PIN Number	PIN Name	Description
(1) 4PIN Internet Interface	1	ETHRX-	Adaptive Ethernet port, Internet RX-
	2	ETHRX+	Adaptive Ethernet port, Internet RX+
	3	ETHTX-	Adaptive Ethernet port, Internet TX-
	4	ETHTX+	Adaptive Ethernet port, Internet TX+
(2) 6PIN Power & UART Interface	1	DC_IN	DC12V±10%
	2	GND	GND
	3	RXD2	TTL 3.3V, Pelco Protocol
	4	TXD2	TTL 3.3V, Pelco Protocol
	5	RXD1	TTL 3.3V, Visca Protocol
	6	TXD1	TTL 3.3V, Visca Protocol

LVDS Interface

Port	Number	PIN Name	Description
(3) LVDS interface (Similar to SONY 30PIN Digital Interface)	1	TXOUT3+	
	2	TXOUT3-	
	3	TXOUTCLK+	
	4	TXOUTCLK-	
	5	TXOUT2+	
	6	TXOUT2-	
	7	TXOUT1+	
	8	TXOUT1-	
	9	TXOUT0+	
	10	TXOUT0-	
	11	GND	Ground PIN
	12	UART1_TX	VISCA Protocol: RS-232 Camera Transmit Signal, the same to (2)TXD1 of 6PIN Port. But cannot connect at the same time. SG Camera is CMOS 3.3V, SONY Camera is 5V.
	13	UART1_RX	VISCA Protocol: RS-232 Camera Receive Signal, the same to (2)RXD1 of 6PIN Port. But cannot connect at the same time. SG Camera is CMOS 3.3V, SONY Camera is 5V.
	14	DC_IN	DC Power input (DC+7V~+12V)
	15	DC_IN	
	16	DC_IN	
	17	DC_IN	
	18	DC_IN	
	19	GND	Ground PIN
	20	GND	

	21	GND	
	22	GND	
	23	GND	
	24	GND	
	25	NC	
	26	NC	SG-ZCM2090ND: Replace Hardware Reset with Software Reset SONY Camera: CAM_RESET
	27	NC	SONY Camera: CVBS_OUT
	28	NC	
	29	NC	
	30	NC	SONY Camera: Y, Pb, Pr Signal
	29	NC	
	30	NC	

4. Dimension



Hangzhou Savgood Technology Co., Ltd.

Rm. 701, Xincheng Fazhan Building #1, No. 406 Xintiandi Street,
Xiacheng District, Hangzhou City, 310004, China
Tel: +86 - (571) 8803 8121
Email: sales@savgood.com
http://www.savgood.com

*Design and specifications are subject to change without prior notification.
© 2013 Savgood Technology Co., Ltd.